



## ABOUT US

PROZTEEL has provided accurate, timely and cost-effective structural steel detailing, pipe fabrication drafting, rebar detailing, estimation, and design services on a multitude of projects across North America and Europe. Through discussion and collaboration, we listen to understand the needs of our customers and cater our solutions accordingly, providing superior quality solutions that our customers and partners can depend on.

Our service offerings will allow you to outsource the above functions so you can focus on your core business while controlling project costs and company overhead. We also understand that these services can be very cyclical. In those cases, we also provide you with the option of integrating our team with yours, to assist in successfully working through the work surges. With three offices across the globe, our team members including Project Managers, Steel Detailers, and Engineers allow PROZTEEL to offer faster response and turnaround times to meet our customers' tightest timelines. Our internal processes, procedures and quality control ensure our deliverables come with the highest quality and are delivered promptly.

As demonstrated by our expanding and loyal group of repeat clientele, once you experience the quality and commitment of our team, we are confident that PROZTEEL will become the obvious partner for all your future projects. We take great pride in what we do and working in close collaboration with our clients every step of the way ensures we deliver the best product and service possible.

## OUR MISSION

At Prozteel, we're dedicated to innovative relationships and unwavering ethics. We empower our clients with dependable, efficient drafting, engineering, and technical support, maximizing success through cost-effective solutions.

## WHY PROZTEEL?



**Cost Effectiveness** - We are a project cost and not an overhead for your organization. You use our services on a pay-per-use basis - so no carrying costs for staff, the latest software, and infrastructure. It helps your organization focus on your core competency and lets us fill in for your need in our area of expertise.



**Fast Turnaround** - Our meticulous planning with your project team will allow you to utilize PROZTEEL's extensive pool of resources for your project, offering a turnaround that will meet any aggressive project timeline.



**Industry Best Practice** - With our customer base spanning the globe we will bring the industry's best practices, knowledge, and technology to your project. This enables your organization to conserve time and resources on research offering you an edge over the other players in the industry.



**Reliability** - You can count on us for quality, timeliness, and attention to detail. We are in the business to support all your drafting/detailing requirements.

# STRUCTURAL STEEL DETAILING

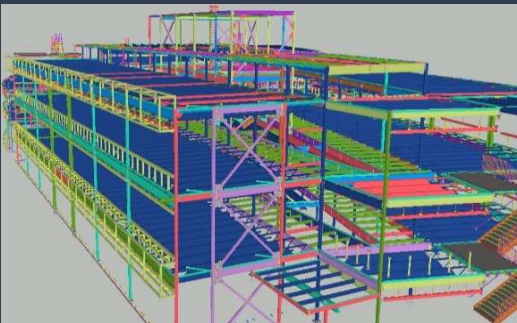
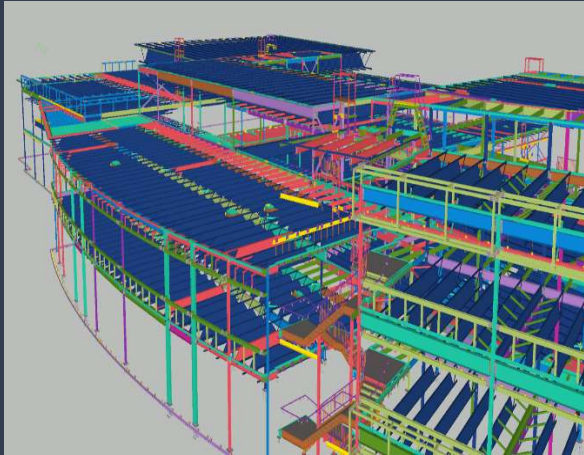
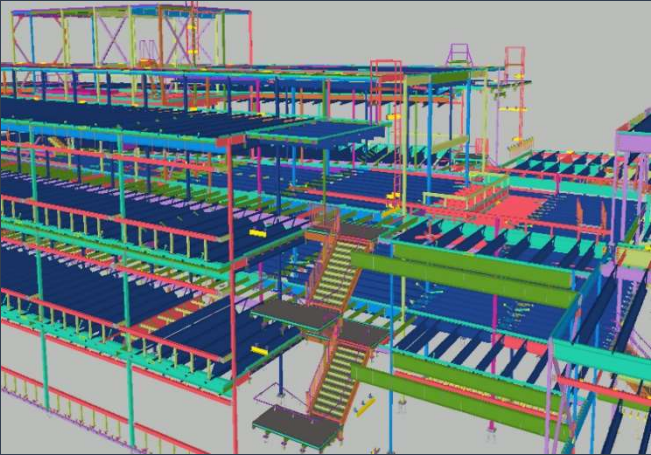
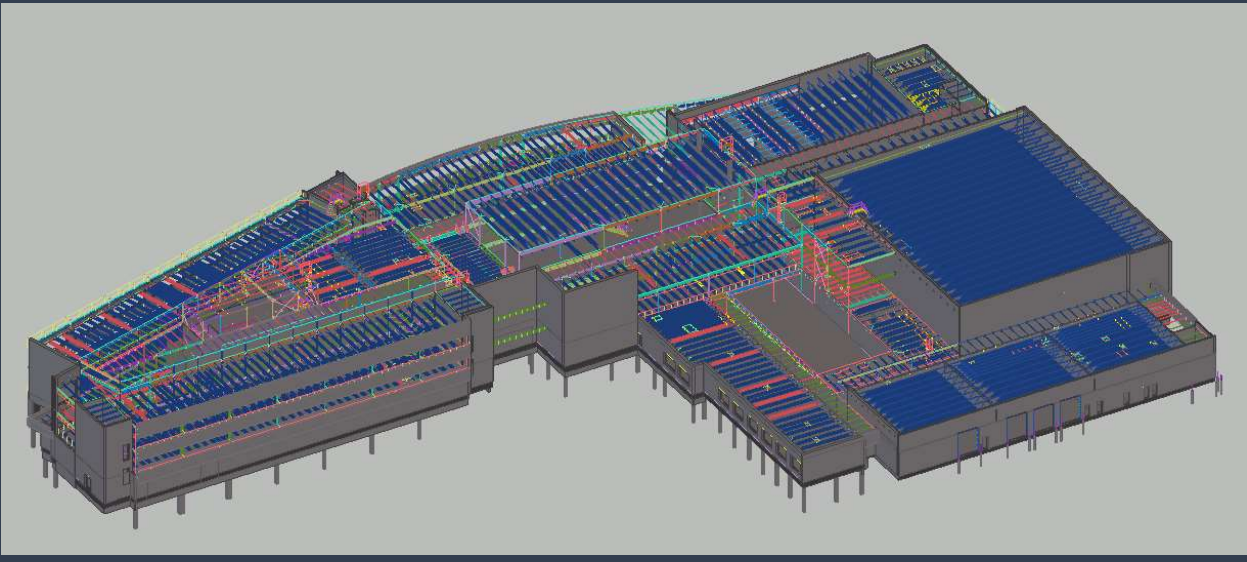
At PROZTEEL we have an in-depth understanding of structural steel in industrial, commercial and oil and gas projects. This enables us to provide industry-standard erection and shop drawings that can feed your shop floor in the formats of your choice.

Our structural steel fabrication detailing and design team works closely with clients to ascertain and fulfill needs specific to projects of any size. Our steel fabrication detailing and design team has experienced structural drafting resources and we make great efforts to ensure our deliverables meet the highest quality standards. The areas of Structural Steel design and drafting that our team has experience with are:

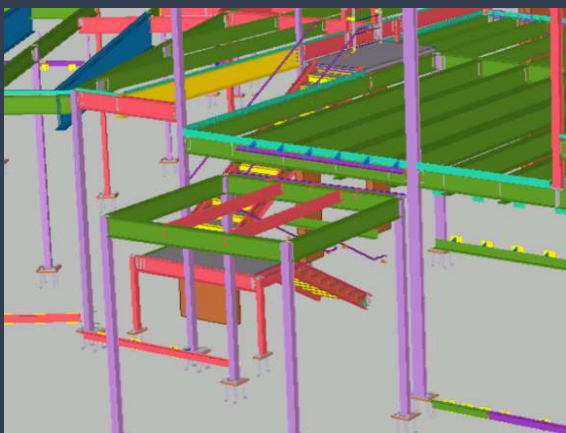
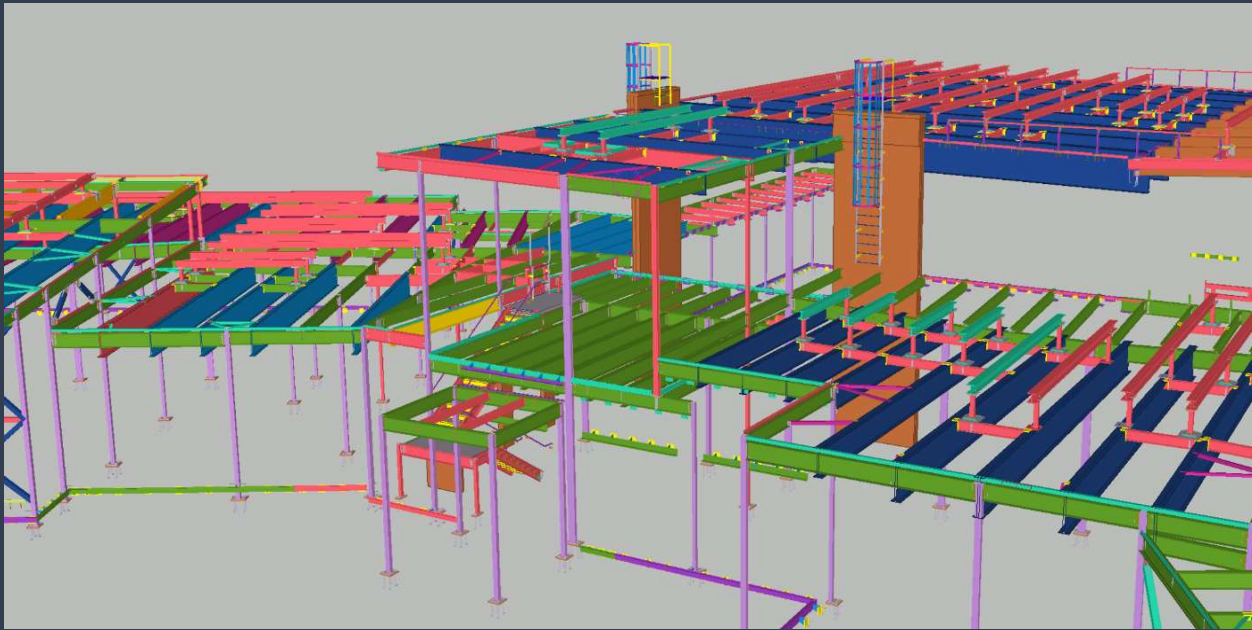
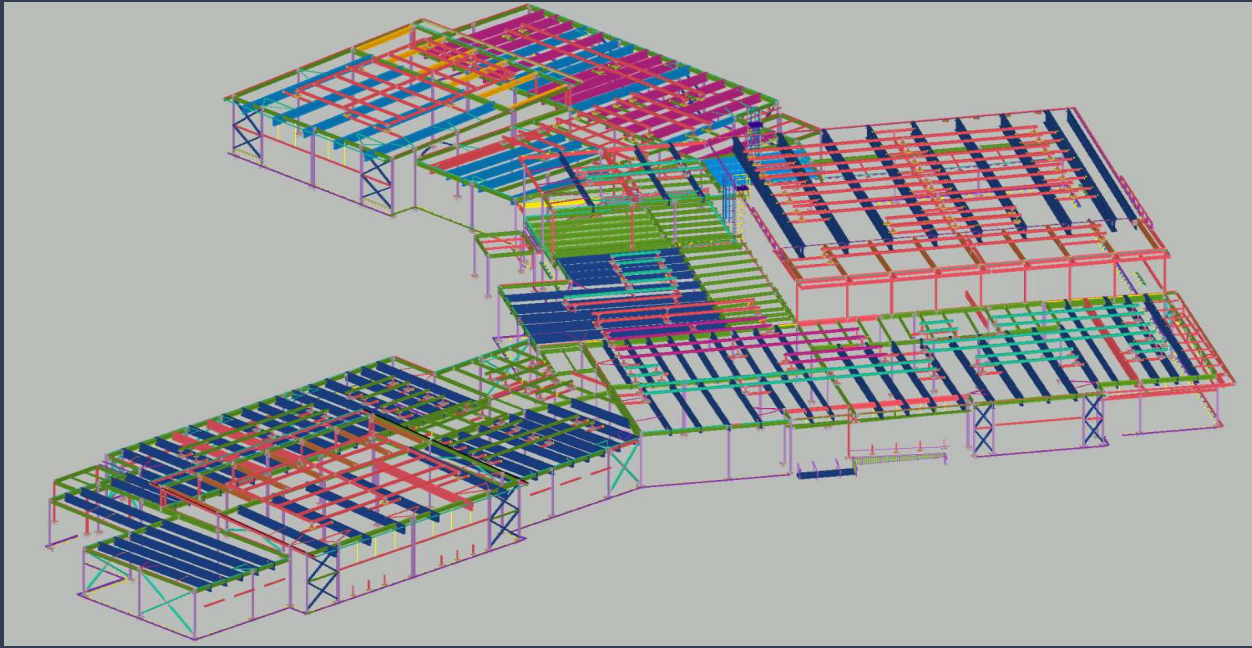
- Material Take Offs (MTOs)
- Advanced Bill of Material (ABM)
- All Types of Steel Columns, Beams, Bracings and Trusses
- All Types of Stairs and Ladders
- All Types of Handrails and Guardrails Layouts and Details
- Anchor Bolt Arrangement Plan
- Concrete Embeds Layouts and Details
- Gratings and Floor Plates Layouts and Details
- Grit Arrangements and Detail Drawings (Structural Shapes)
- Preparation of Unfolded Drawings for Pipe Materials
- Single Part Drawings/Gather Sheets Preparation
- Pipe Rack Supporting Structures
- Monorail/Crane Runway Supporting Structure
- Connection Design & Stamping

# PROJECTS PORTFOLIO

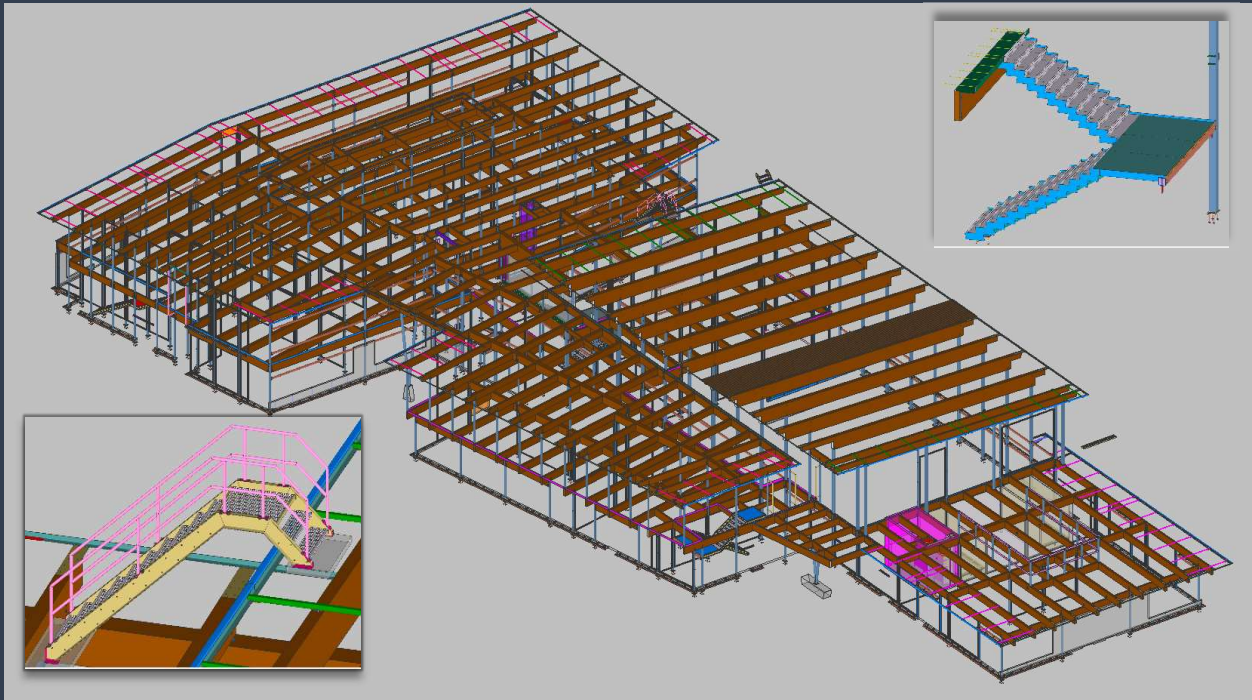
Our team has a collective experience of 100+ years in detailing from simple commercial to very complex industrial projects. Here are a few sample projects that were executed by our team members:



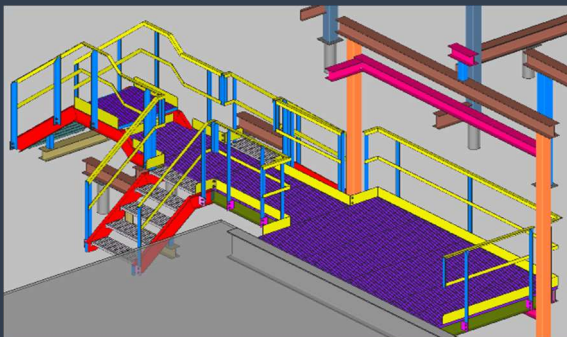
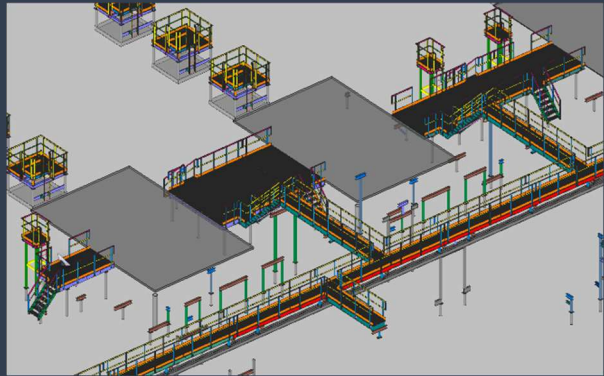
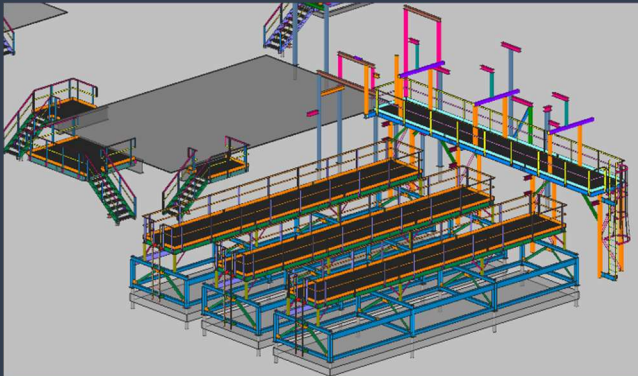
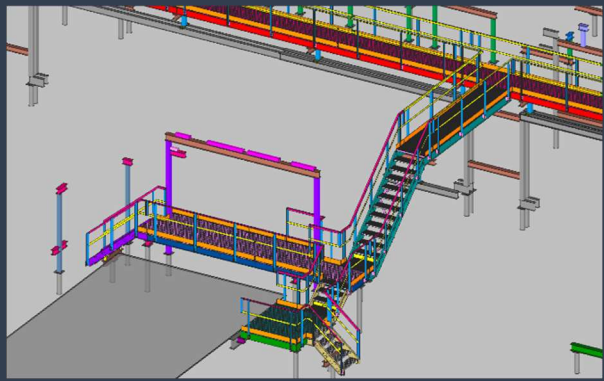
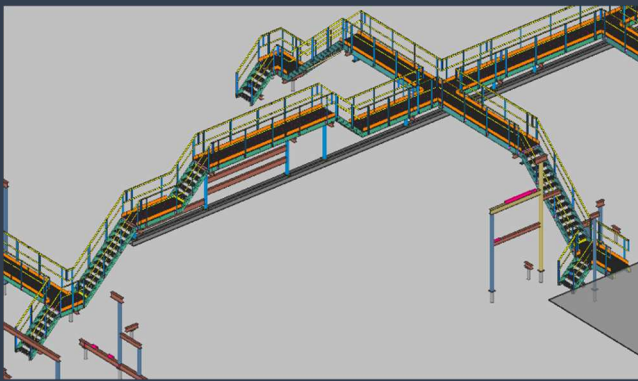
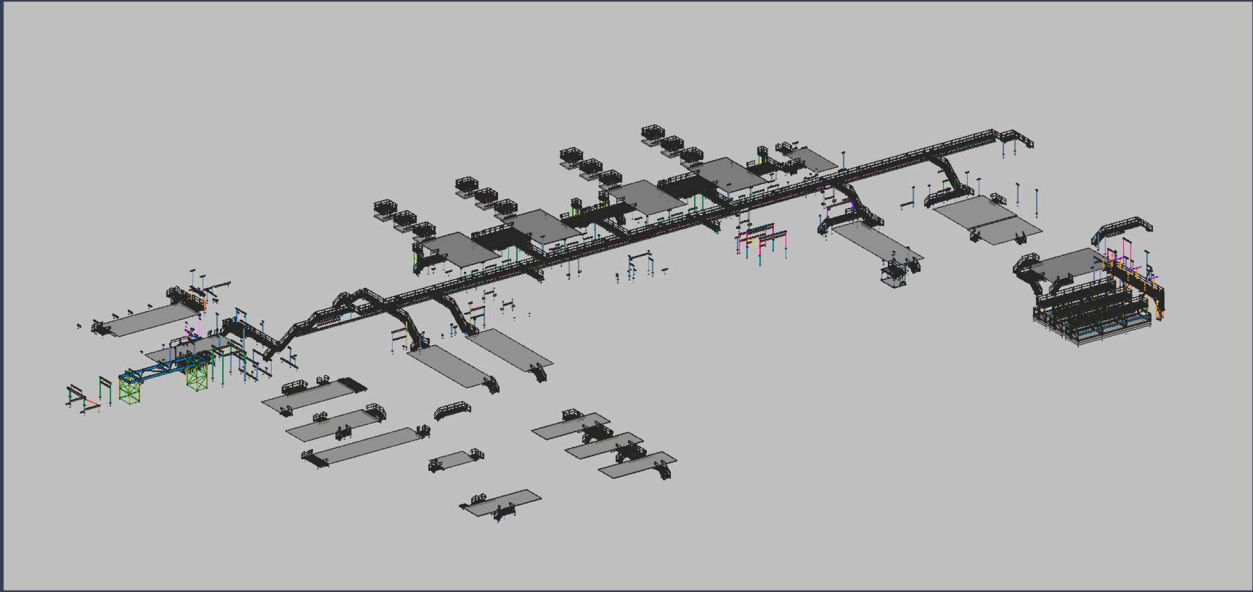
Type of Project: Institutional (School)  
Steel: 620 Metric Tons  
Design: CISC  
Software: TEKLA  
Complexity: Medium (Curved Structure)



Type of Project: Institutional (School)  
Steel: 210 Metric Tons  
Design: CISC  
Software: TEKLA  
Complexity: Medium (Hip & Valley)

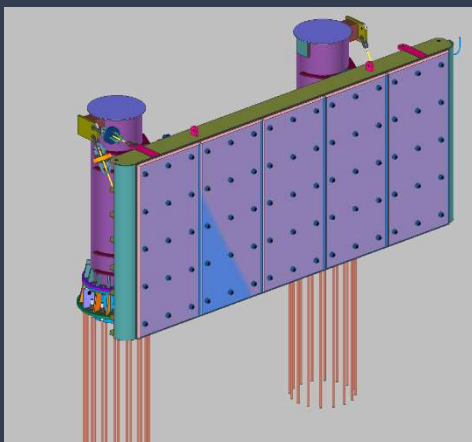
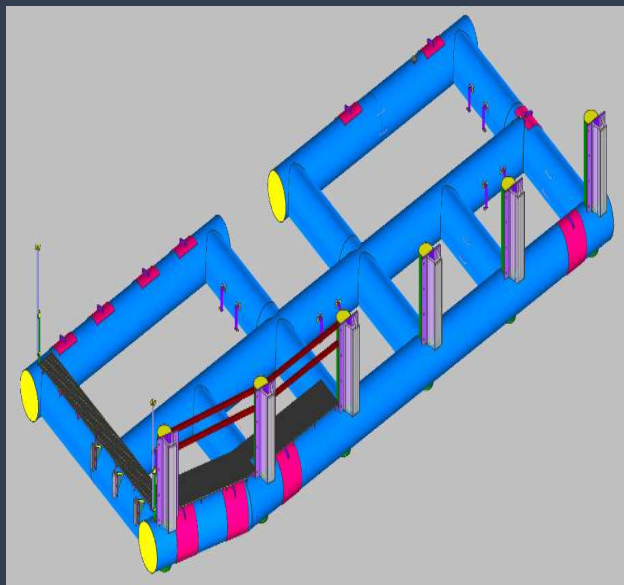
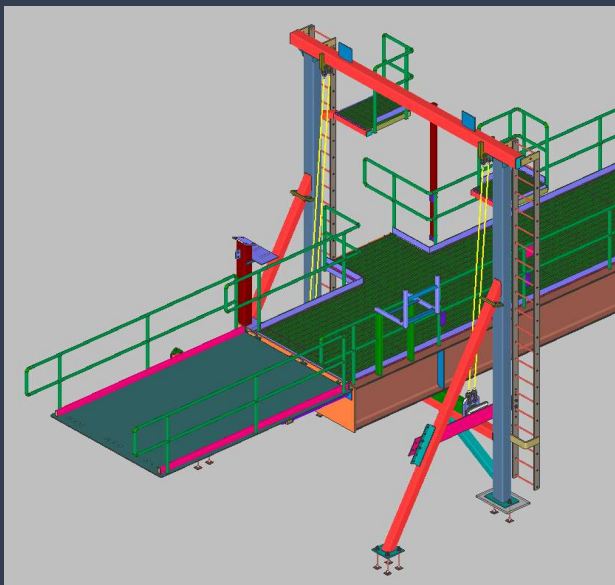
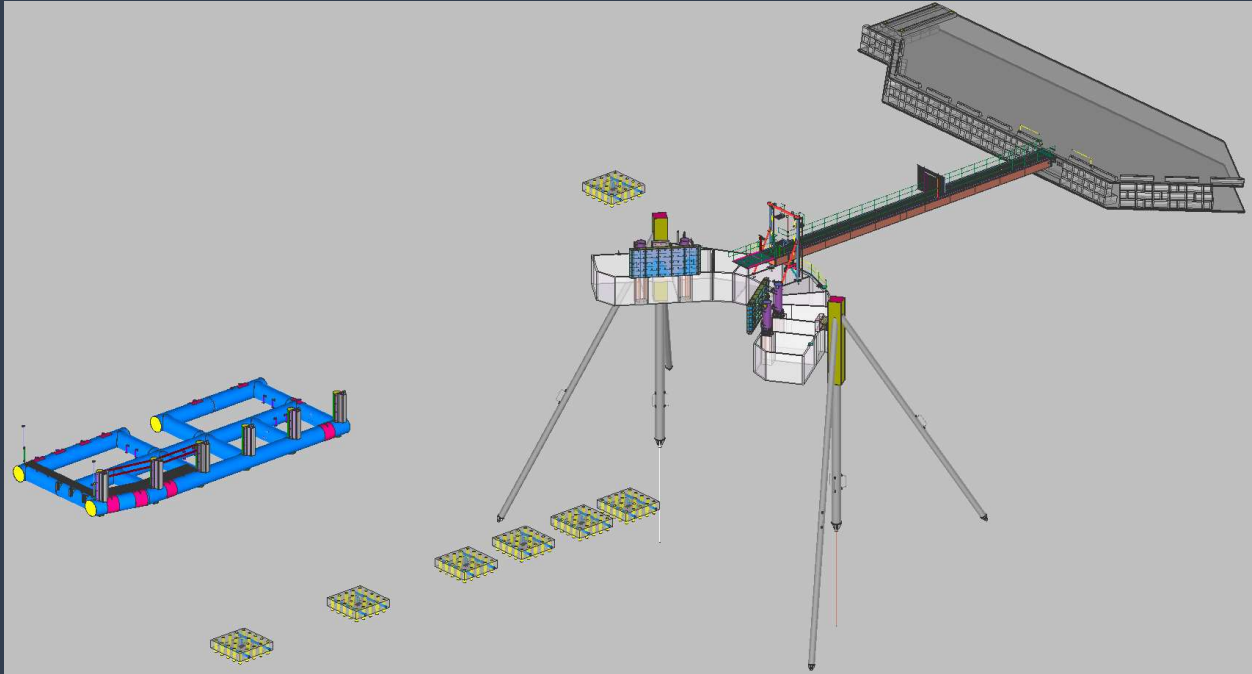


Type of Project: Institutional (School)  
Steel: 110 Metric Tons  
Design: CISC  
Software: SDS2  
Complexity: High (Glulam Structure)

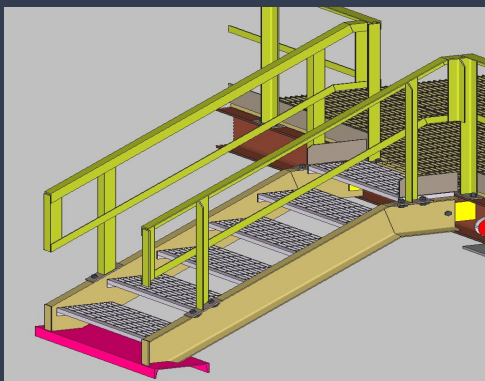
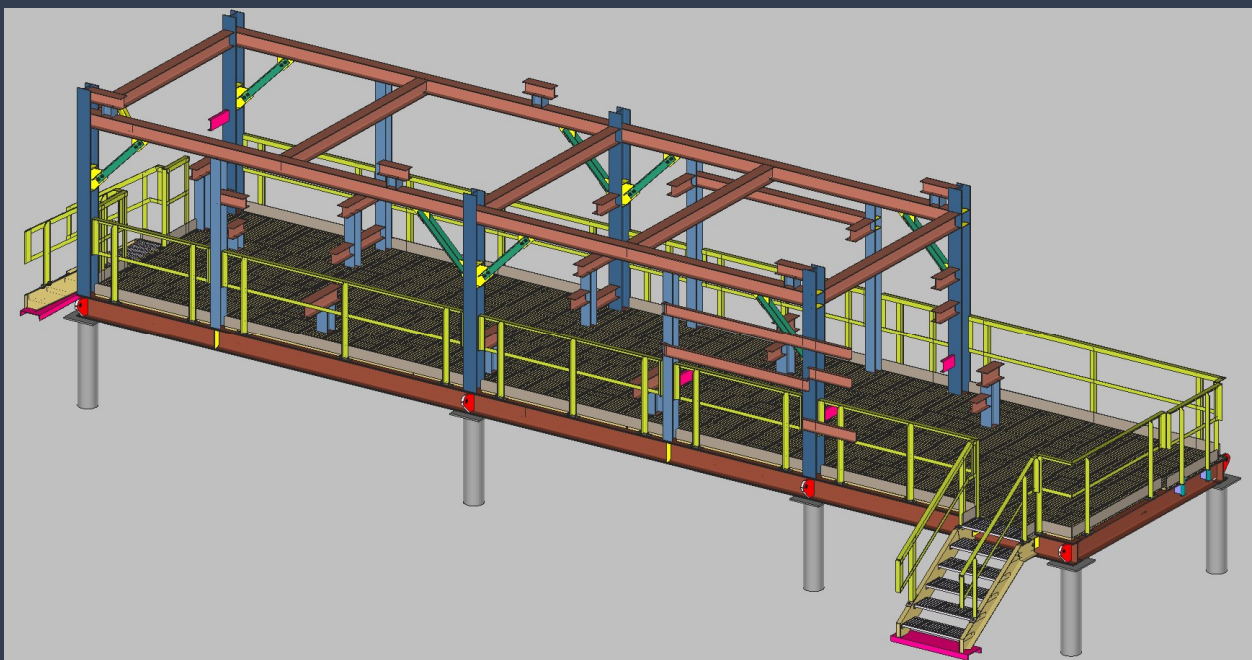
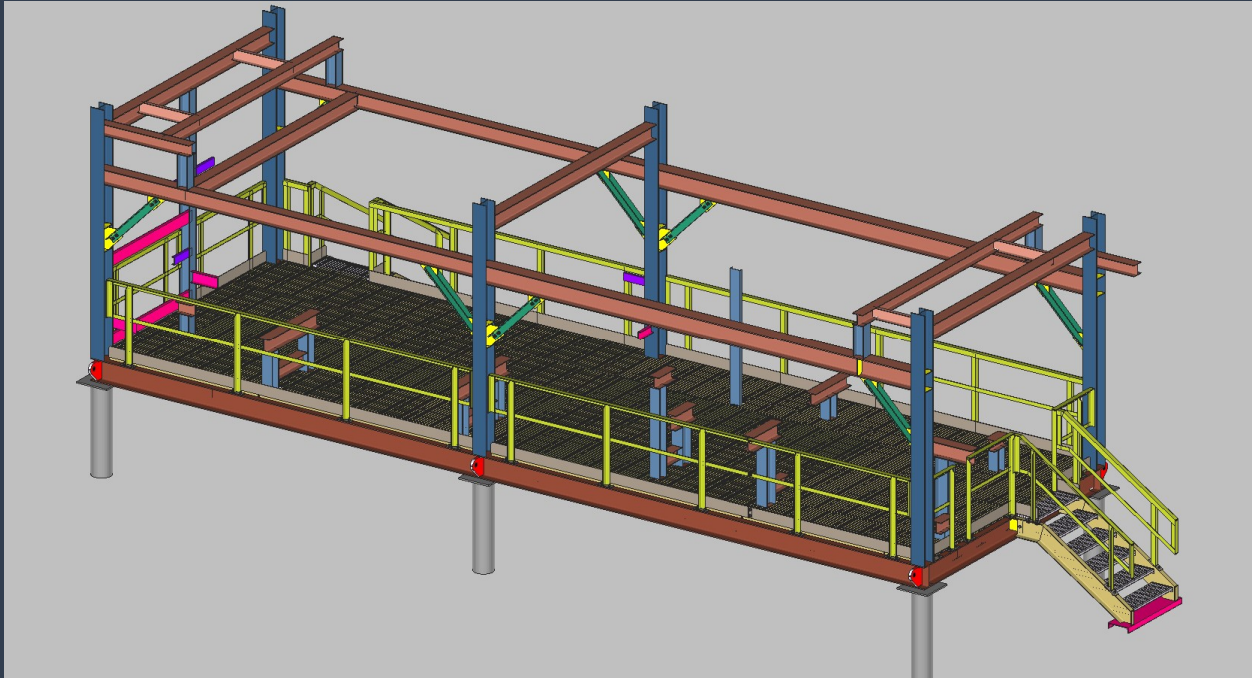


Type of Project: Industrial (Gas Plant)  
Steel: 250 Metric Tons  
Design: CISC  
Software: SDS2  
Complexity: Medium (160 m of Catwalks)





Type of Project: Marine (Lay by berth & Terminal)  
Steel: 120 Metric Tons  
Design: CISC  
Software: SDS2  
Complexity: High (Floating Structure)



Type of Project: Industrial (Pipeline Skid)

Steel: 30 Metric Tons

Design: CISC

Software: SDS2

Complexity: Medium

## ENGAGEMENT MODELS

- Lump sum
- Tonnage of steel
- Hourly basis
- Resources model

## DELIVERABLES

- Drawing files (.dwg)
- DXF files (.dxf)
- DWF files (.dwf)
- PDF files (.pdf)
- CNC files (.nc1)
- KISS files (.kss)
- EJE files (.eje)
- StruMIS
- Tekla EPM

## SOFTWARE



# PIPE FABRICATION DRAFTING

At PROZTEEL we have an in-depth understanding of pipe fabrication and we have built a resource pool that produces industry best shop drawings that can feed your shop floor in the formats of your choice. We intend to work closely with your team making working with us seamless.

Our pipe fabrication drafting and designing team works closely with our clients to ascertain and fulfill needs specific to their shop. Our team has experienced pipe drafting resources who make great efforts to ensure our deliverables meet the highest quality standards. Our design and drafting team has experience with:

- 3D modeling
- Preparation of detailed BOMs, MTOs & LTOs
- Generation of ISO drawings from 3D models
- Generation of spool drawings from ISO drawings or PCF input

**GENERAL NOTES**

1. WELD TEST VENTS AND DRAINS BY FABRICATOR.
2. ALL PIPE SUPPLIES TO BE SUPPLIED BY FABRICATOR.
3. MECHANICAL FABRICATOR TO VERIFY ALL DIMENSIONS PRIOR TO FABRICATION.
4. SLOPE AND ANCHORS TO BE TYPED IN WHEN NECESSARY FOR P&I.
5. SLOPE SHALL BE AT 0.2% AND ALL TRENCHES AT 1%.

**REVISIONS**

REV	DESCRIPTION	DATE	APPROVED
0	ISSUED FOR CONSTRUCTION		

**PROJECT:** SHEET TITLE: LSD

**CLIENT:**

**REVISIONS**

REV	DESCRIPTION	DATE	APPROVED
0	ISSUED FOR CONSTRUCTION		

**INSULATION BELOW GRADE**

NO.	SUBSTANCE	THICKNESS	NO.	NO.	NO.
DESIGN PRESSURE	1.945 MPa	11000	NO	NO	NO
TEST PRESSURE	2.92 MPa	11000	YES	NO	YES
DESIGN TEMPERATURE	45 TO 200 C	11000	NO	NO	NO
TEST TEMPERATURE	APPROX	2.000	NO	NO	NO
CODE	ASME B31.3	1	YES	NO	NO
PROPRIETARY AND CONFIDENTIAL					

**INSULATION ABOVE GRADE**

NO.	SUBSTANCE	THICKNESS	NO.	NO.	NO.
DESIGN PRESSURE	1.945 MPa	11000	NO	NO	NO
TEST PRESSURE	2.92 MPa	11000	YES	NO	YES
DESIGN TEMPERATURE	45 TO 200 C	11000	NO	NO	NO
TEST TEMPERATURE	APPROX	2.000	NO	NO	NO
CODE	ASME B31.3	1	YES	NO	NO
PROPRIETARY AND CONFIDENTIAL					

**BILL OF MATERIALS**

TAG	SIZE	DESCRIPTION	QTY
1	12	PIPE	
1	12	PIPE, BE, SMLS, SCH STD, A-333 GR. 5, NACE B8E	28304 MM
2	12X3	EITTINGS	2
3	12X1/2	WELD-O-LET, BW, SCH STD, A-350 GR. LF2, NACE	1
4	3	THREAD-O-LET, CL 3000, A-350 GR. LF2, NACE	1
5	1/2	ELBOW, 90, LF, BW, SCH-40, A-450 GR. WPL, NACE	2
6	1/2	SUPPLE, SMLS, SCH 160, A-333 GR. 5, NACE TBE (100 0000 MM LO)	1
7	12	FLANGE, RFWN, CL 150, SCH STD BORE, A-350 GR. LF2, NACE	4
8	3	FLANGE, RFWN, CL 150, SCH 40 BORE, A-350 GR. LF2, NACE	2
9	12	GASKETS	1
10	7/8X120	GASKET, CL 150, SPIRAL WOUND, 316SS	1
11	1/2	BOLTS	3
		(1) STUD BOLT, CW 2 HEAVY HEX NUT, CL 150, A-193-B7ME164-2HM	
		VALVED (ON-LINE ITEMS)	
		BALL VALVE, THIRD, CL3000, SA-350-LF2 or A-350-LCC, NACE, LEVER OP.	1

**SCALE:** N.T.S.

**DRAWN BY:**

**CHECKED:**

**ENG. APPR.:**

**DATE:**

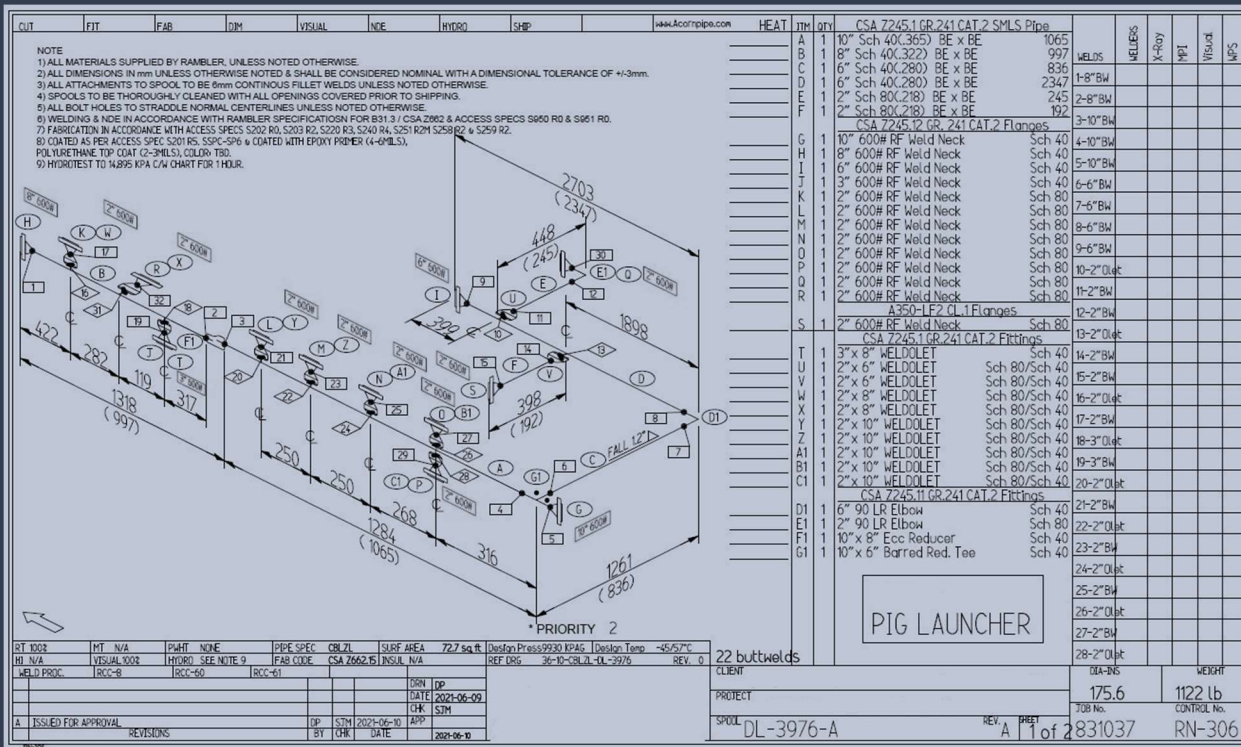
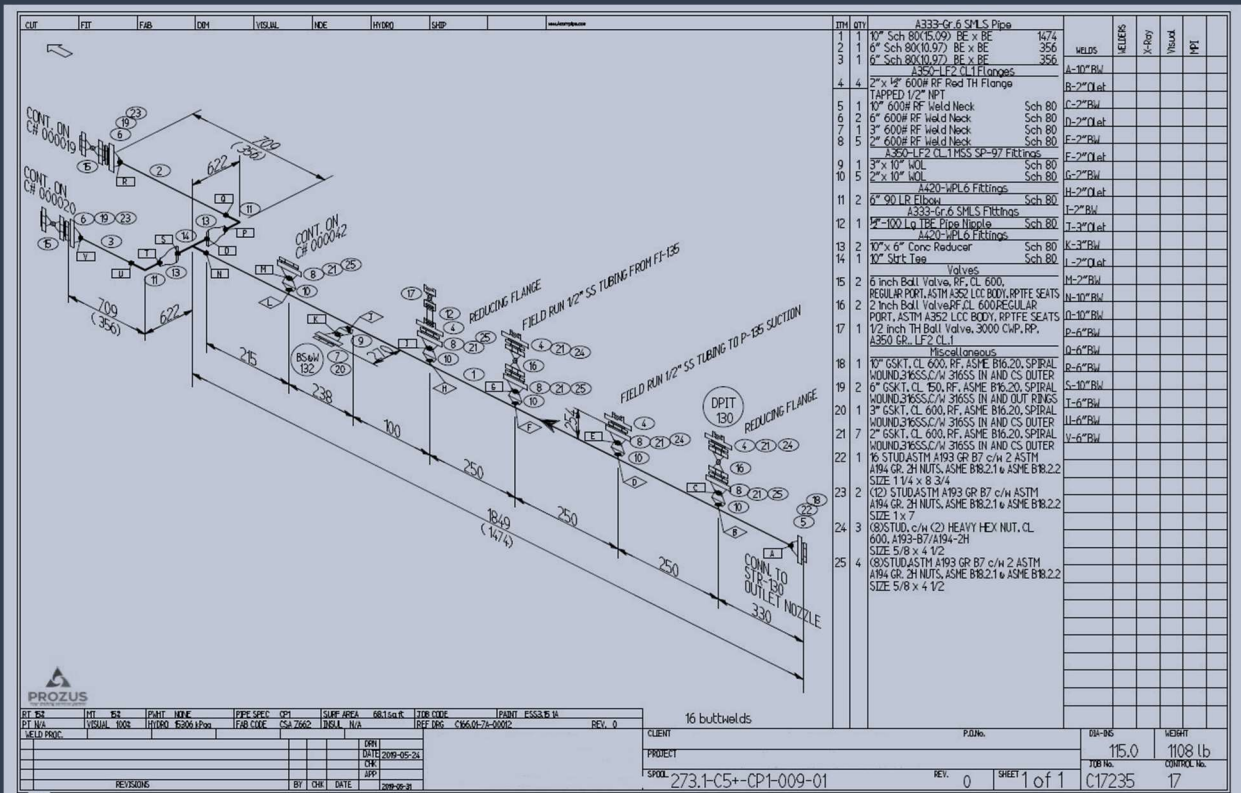
**SCALE:** N.T.S.

**DRAWING NUMBER:**

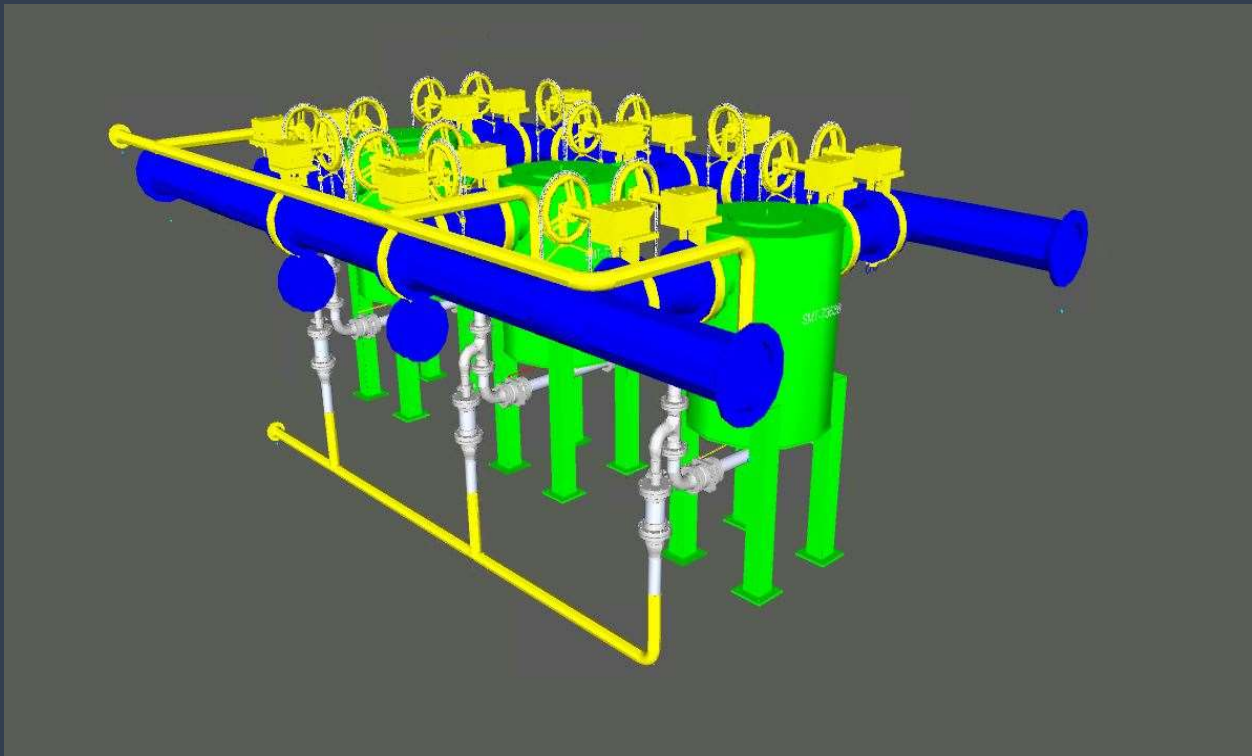
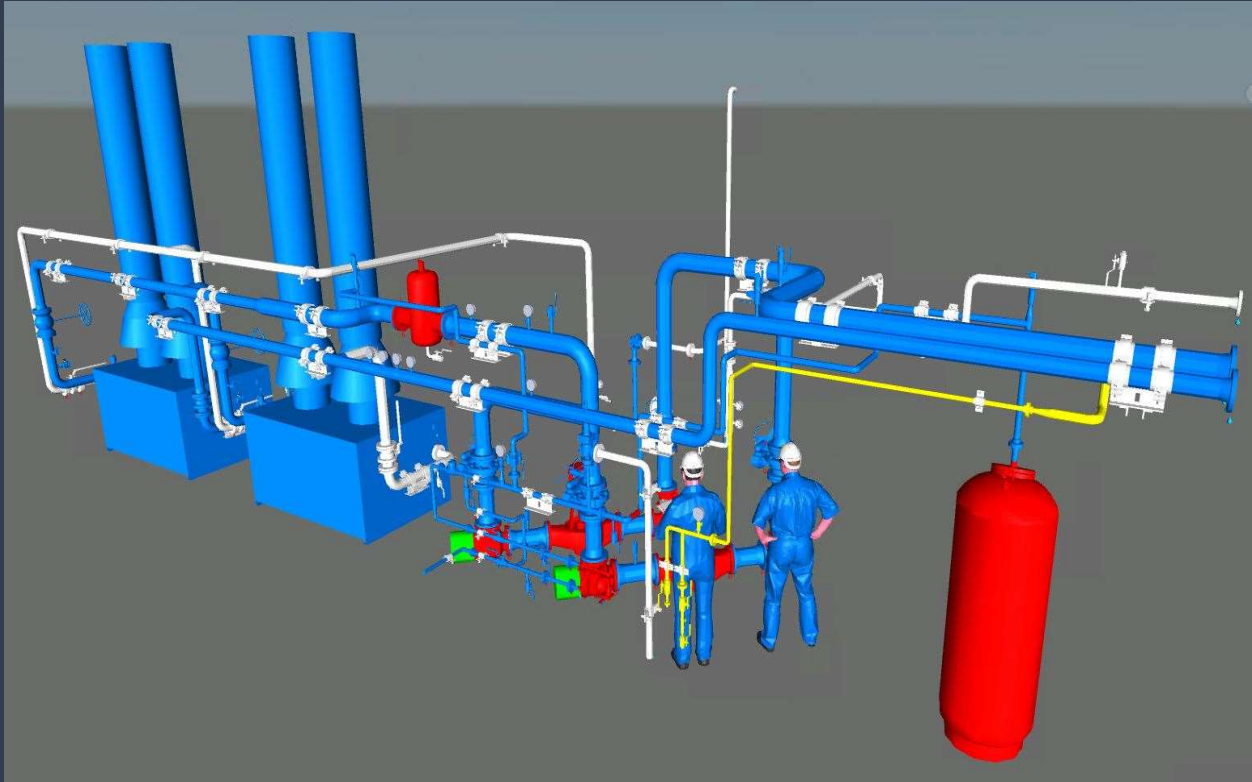
**SCALE:** N.T.S.

**REV. 0**

Sample ISO drawing



Sample Spool drawings



Sample 3-D Models

## ENGAGEMENT MODELS

- Lump sum
- Per Cut Sheet price
- Hourly basis
- Resources model

## DELIVERABLES

- DWF files (.dwf)
- PDF files (.pdf)
- Acorn files (.cdx)

## SOFTWARE



# OUR PARTNERS



**PROZUS** - Design, drafting and document control services to construction, fabrication, manufacturing, and engineering companies.

[www.prozus.com](http://www.prozus.com)



**APPBEAT SOLUTIONS** - Redefining every aspect of business analytics. Power Platform, SharePoint, System Integrations & Customer IT Solutions.

[www.appbeatsol.com](http://www.appbeatsol.com)



#### **Mailing Address**

Prozteil Inc.  
PO Box 27001, Tuscany RPO  
Calgary, AB, T3L 2Y1

#### **Canada**

Suite 600, 717-7th Ave SW  
Calgary, AB, T2P 3H6  
Phone: +1 (587) 785-8444

#### **USA**

2100 N Greenville Ave  
Richardson, TX 75082  
Phone: +1 (945) 289-3670