



STRUCTURAL STEEL DETAILING

ABOUT US

PROZTEEL has provided accurate, timely and cost-effective structural steel detailing, pipe fabrication drafting, rebar detailing, estimation, and design services on a multitude of projects across North America and Europe.

Through discussion and collaboration, we listen to understand the needs of our customers and cater our solutions accordingly, providing superior quality solutions that our customers and partners can depend on.

Our service offerings will allow you to outsource the above functions so you can focus on your core business while controlling project cost and company overhead. We also understand that these services can be very cyclical. In those cases, we also provide you with the option of integrating our team with yours, to assist in successfully working through the work surges. With three offices across the globe, our team members including Project Managers, Steel Detailers, and Engineers allow PROZTEEL to offer faster response and turnaround times to meet our customers' tightest timelines. Our internal processes, procedures and quality control ensures our deliverables come with the highest quality and are delivered in a timely manner.

As demonstrated by our expanding and loyal group of repeat clientele, once you experience the quality and commitment of our team, we are confident that PROZTEEL will become the obvious partner for all your future projects. We take great pride in what we do and working in close collaboration with our clients every step of the way ensures we deliver the best product and service possible.

OUR MISSION

Through creative relationships and strong ethics, we provide maximum value and create economic opportunity for our clients' projects and operations through dependable, efficient, cost effective and scalable drafting/detailing, engineering, and technical support.

WHY PROZTEEL?



Cost Effectiveness - We are a project cost and not an overhead for your organization. You use our services on a pay-per-use basis - so no carrying costs of staff, latest software, and infrastructure. It helps your organization focus on your core competency and lets us fill in for your need in our area of expertise.



Fast Turnaround - Our meticulous planning with your project team will allow you to utilize PROZTEEL's extensive pool of resources to your project, offering a turnaround that will meet any aggressive project timeline.



Industry Best Practice - With our customer base spanning the globe we will bring industry's best practices, knowledge, and technology to your project. This enables your organization to conserve time and resources on research offering you an edge over the other players in the industry.



Reliability - You can count on us for quality, timeliness, and attention to detail. We are in the business to support all your drafting/detailing requirements.

STRUCTURAL STEEL DETAILING

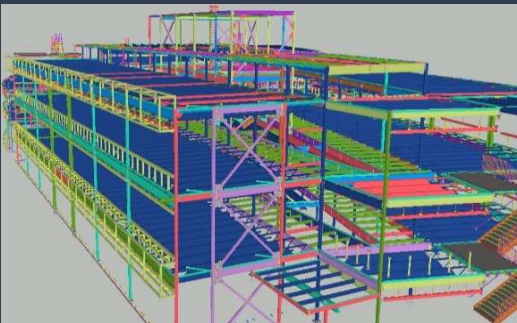
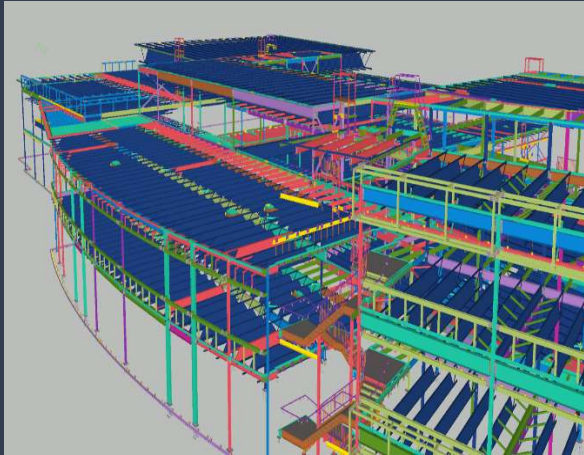
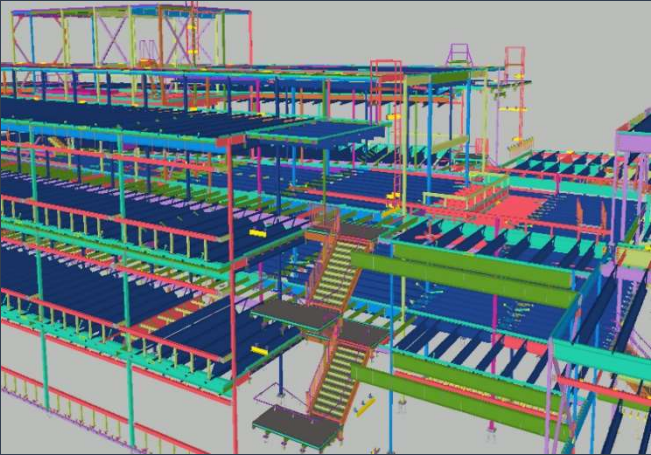
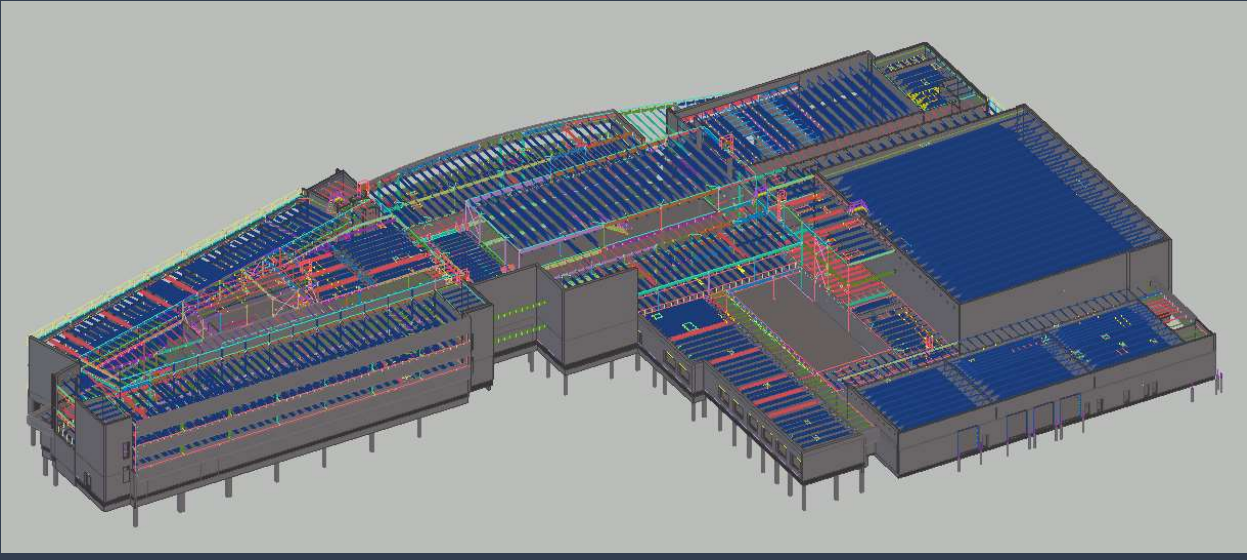
At PROZTEEL we have an in-depth understanding of structural steel in industrial, commercial and oil and gas projects. This enables us to provide industry standard erection and shop drawings that can feed your shop floor in the formats of your choice.

Our structural steel fabrication detailing, and design team works closely with clients to ascertain and fulfill needs specific to projects of any size. Our steel fabrication detailing, and design team has experienced structural drafting resources and we make great efforts to ensure our deliverables meet the highest quality standards. The areas of Structural Steel design and drafting that our team has experience with are:

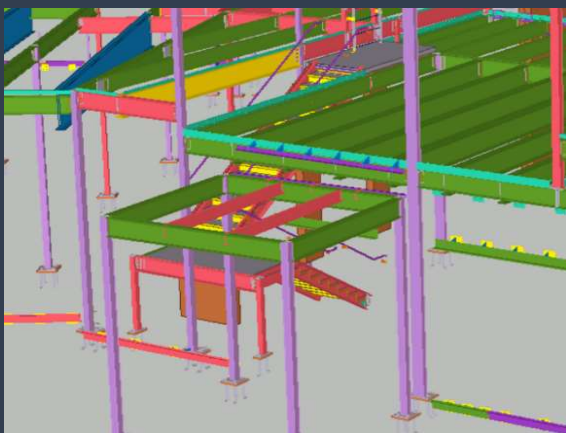
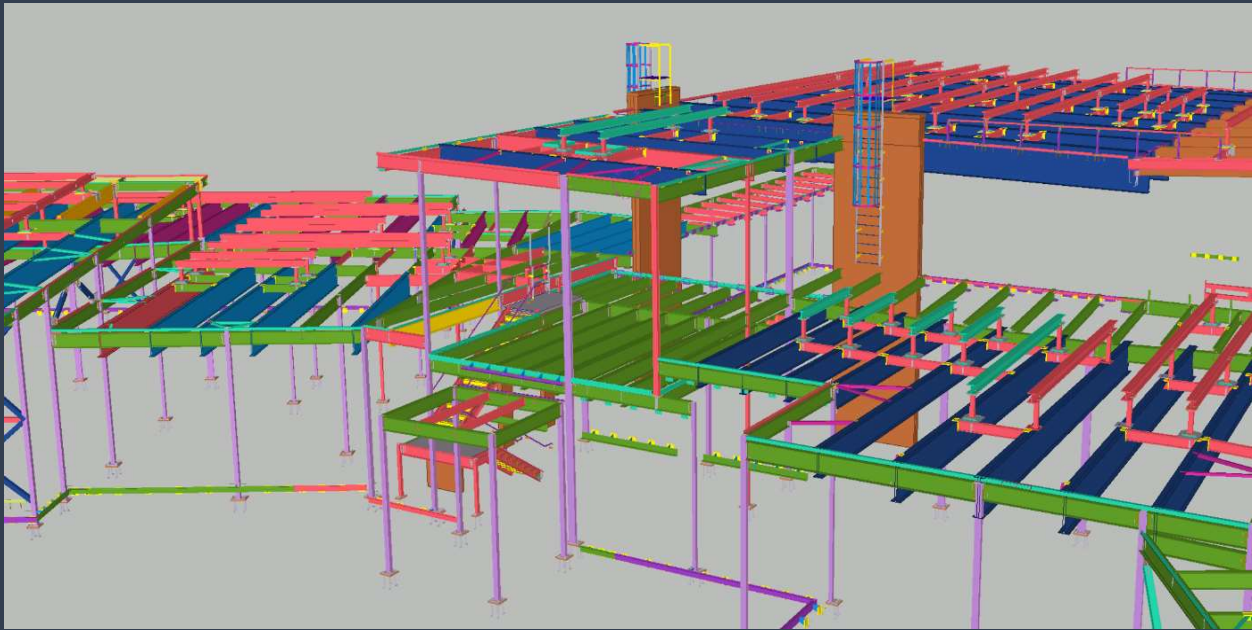
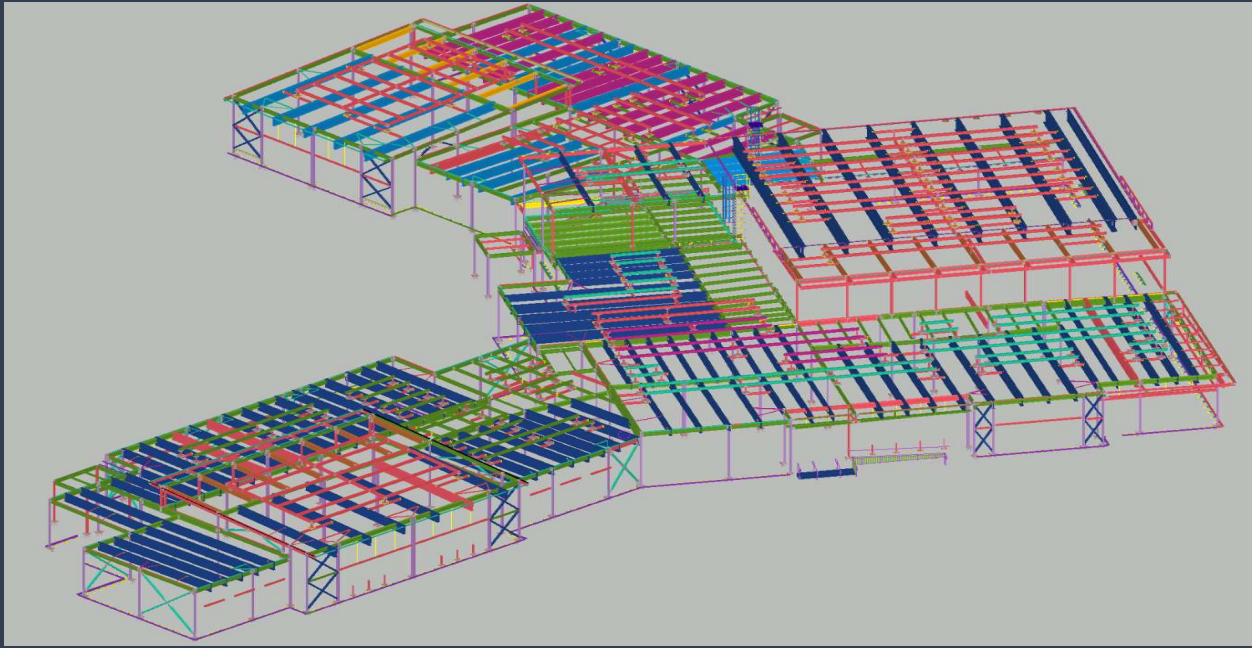
- Material Take Offs (MTOs)
- Advanced Bill of Material (ABM)
- All Types of Steel Columns, Beams, Bracings and Trusses
- All Type of Stairs and Ladders
- All Type of Handrails and Guardrails Layouts and Details
- Anchor Bolt Arrangement Plan
- Concrete Embeds Layouts and Details
- Gratings and Floor Plates Layouts and Details
- Grit Arrangements and Detail Drawings (Structural Shapes)
- Preparation of Unfolded Drawings for Pipe Materials
- Single Part Drawings/Gather Sheets Preparation
- Pipe Rack Supporting Structures
- Monorail/Crane Runway Supporting Structure
- Connection Design & Stamping

PROJECTS PORTFOLIO

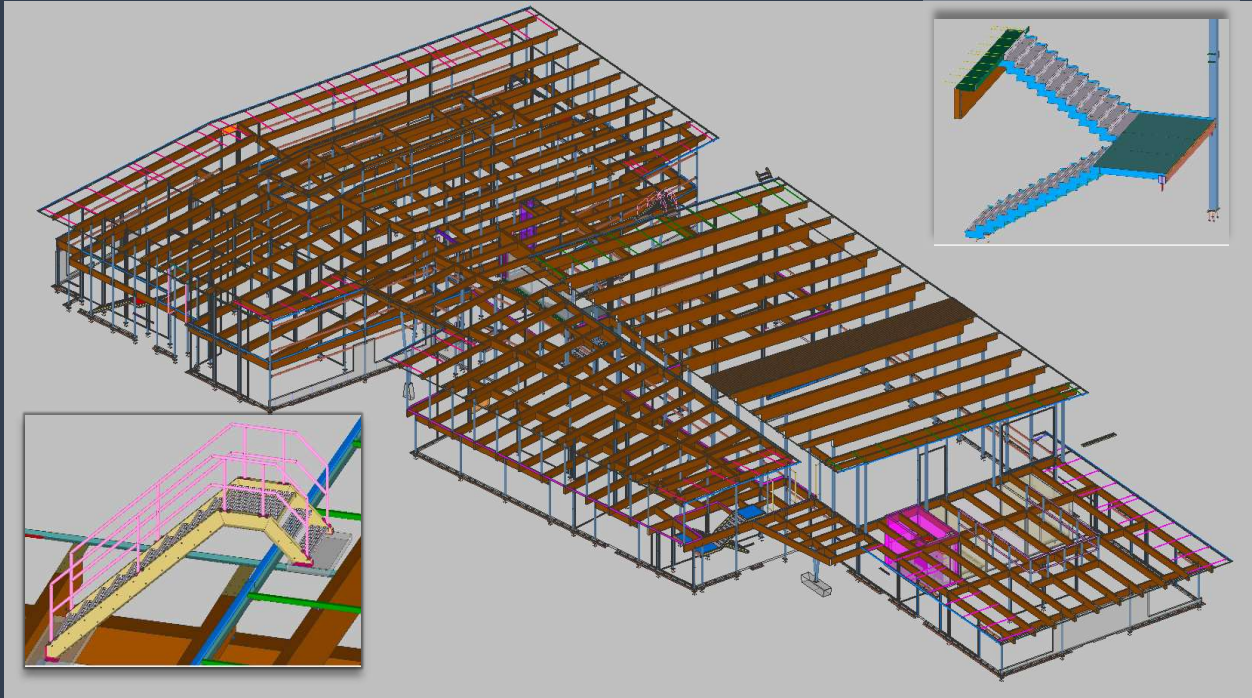
Our team has a collective experience of 100+ years in detailing from simple commercial to very complex industrial projects. Here are a few sample projects that were executed by our team members:



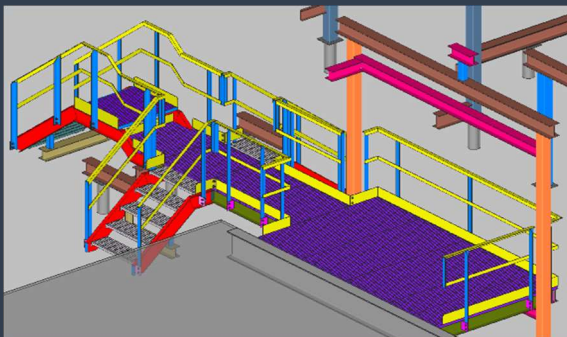
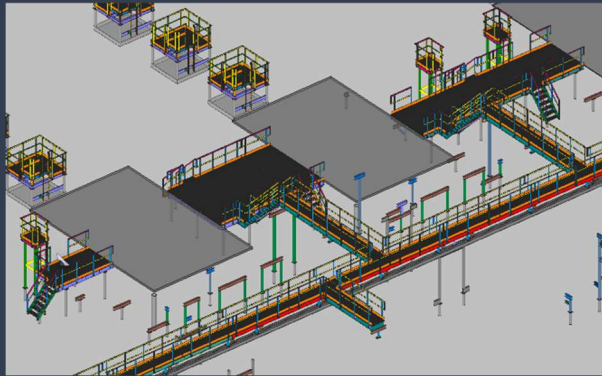
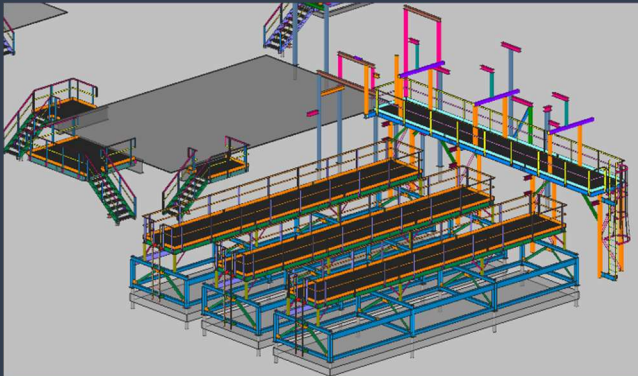
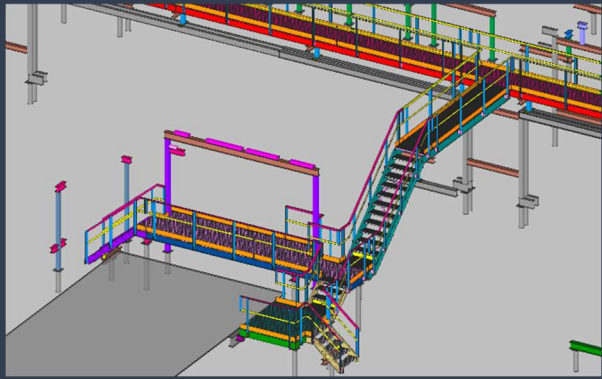
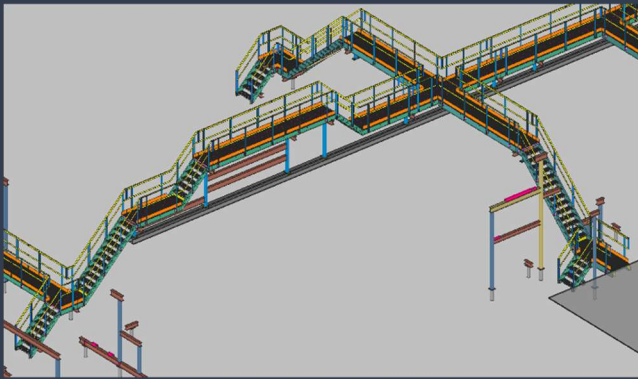
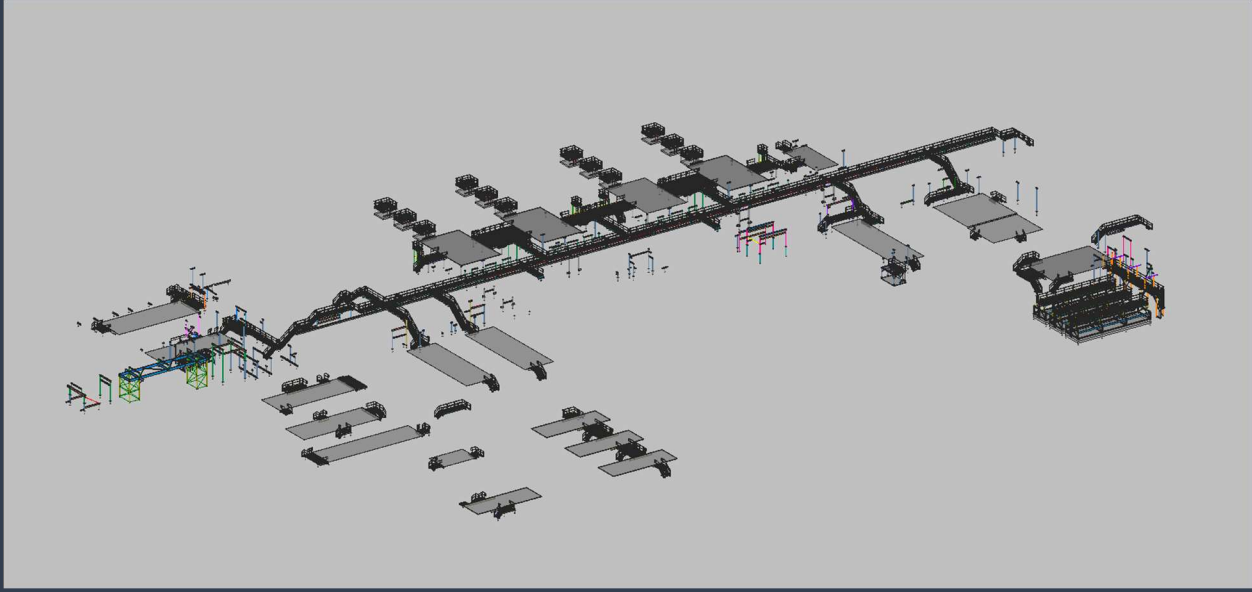
Type of Project: Institutional (School)
Steel: 620 Metric Tons
Design: CISC
Software: TEKLA
Complexity: Medium (Curved Structure)



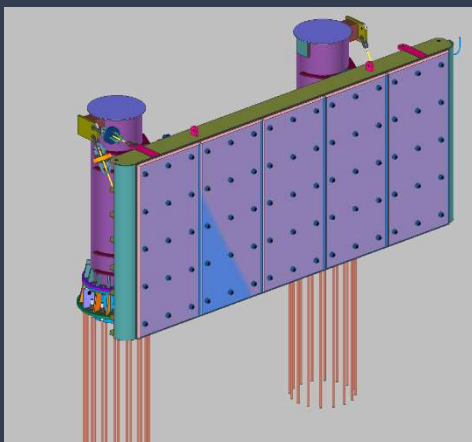
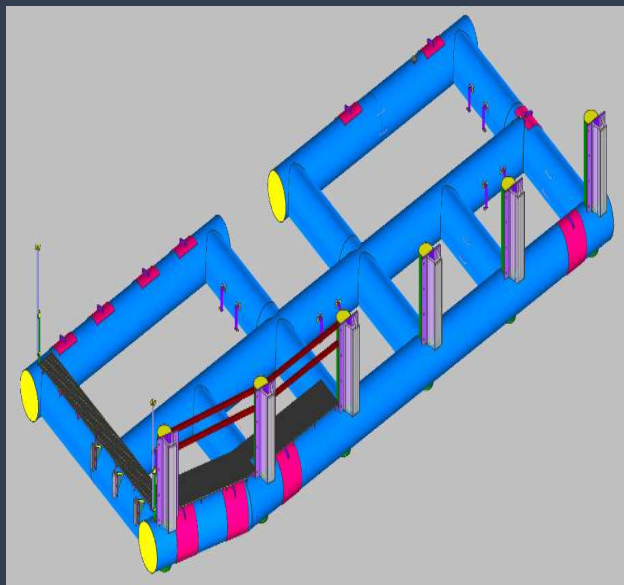
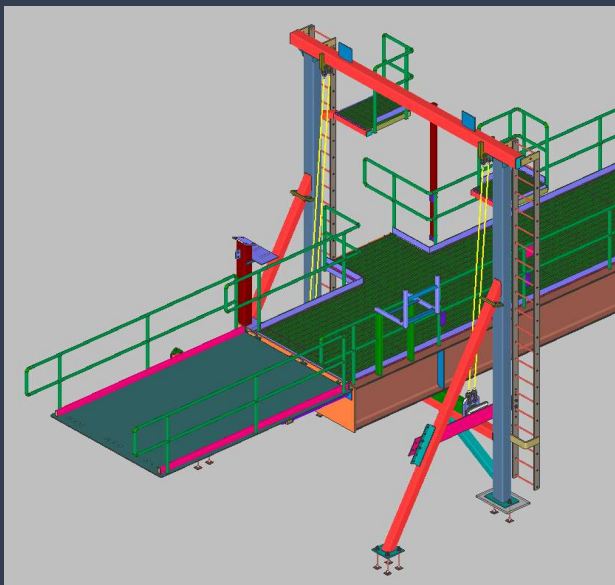
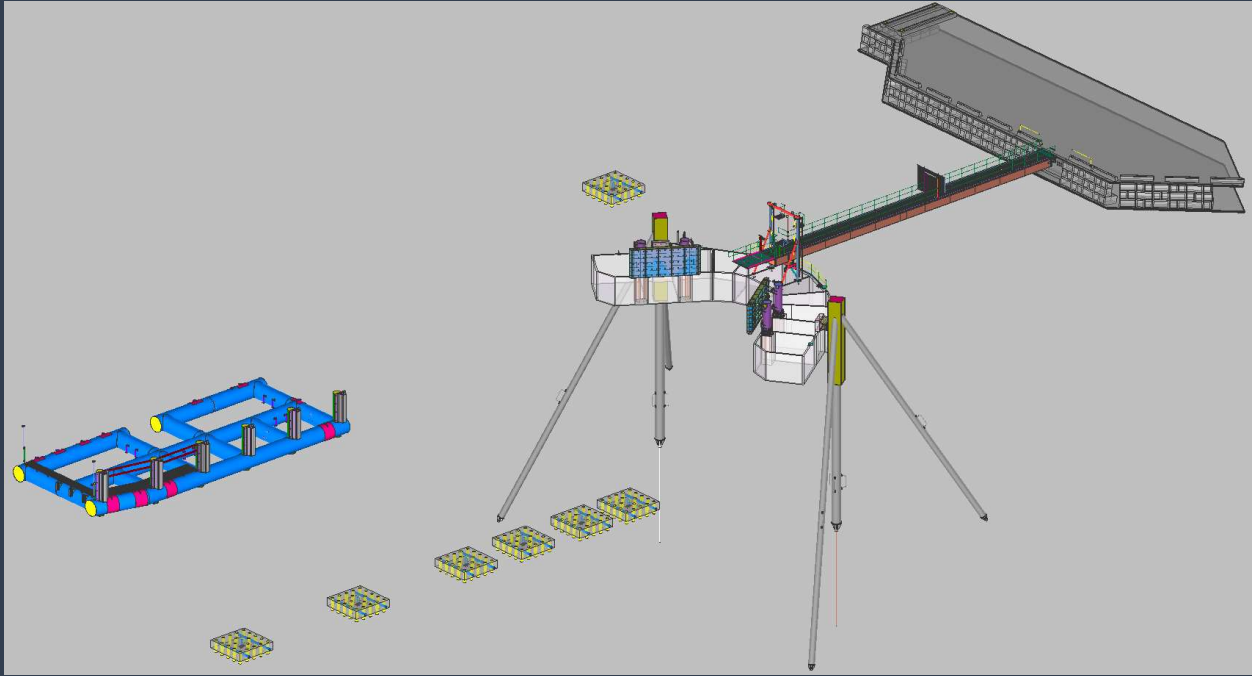
Type of Project: Institutional (School)
Steel: 210 Metric Tons
Design: CISC
Software: TEKLA
Complexity: Medium (Hip & Valley)



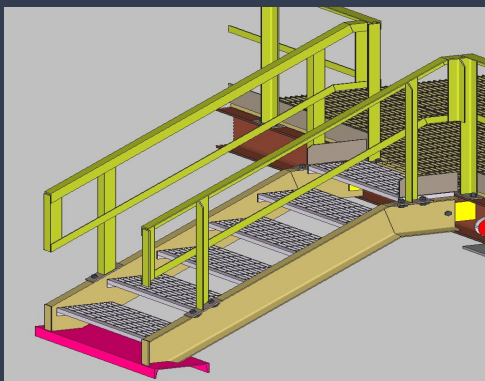
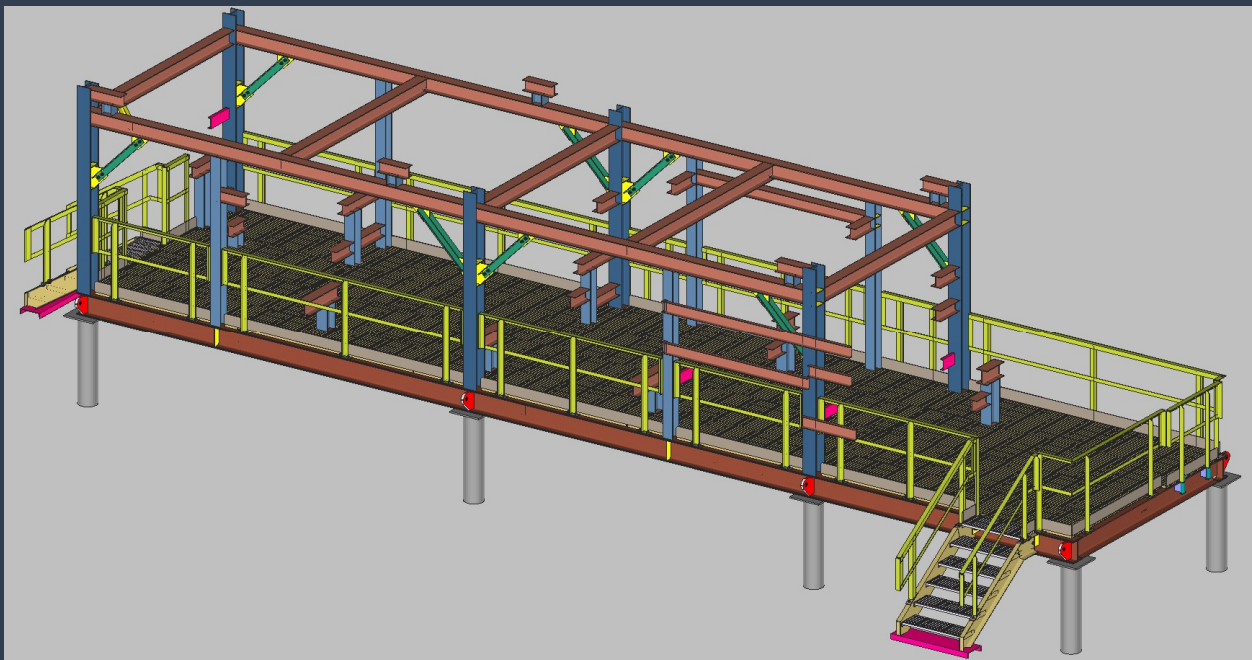
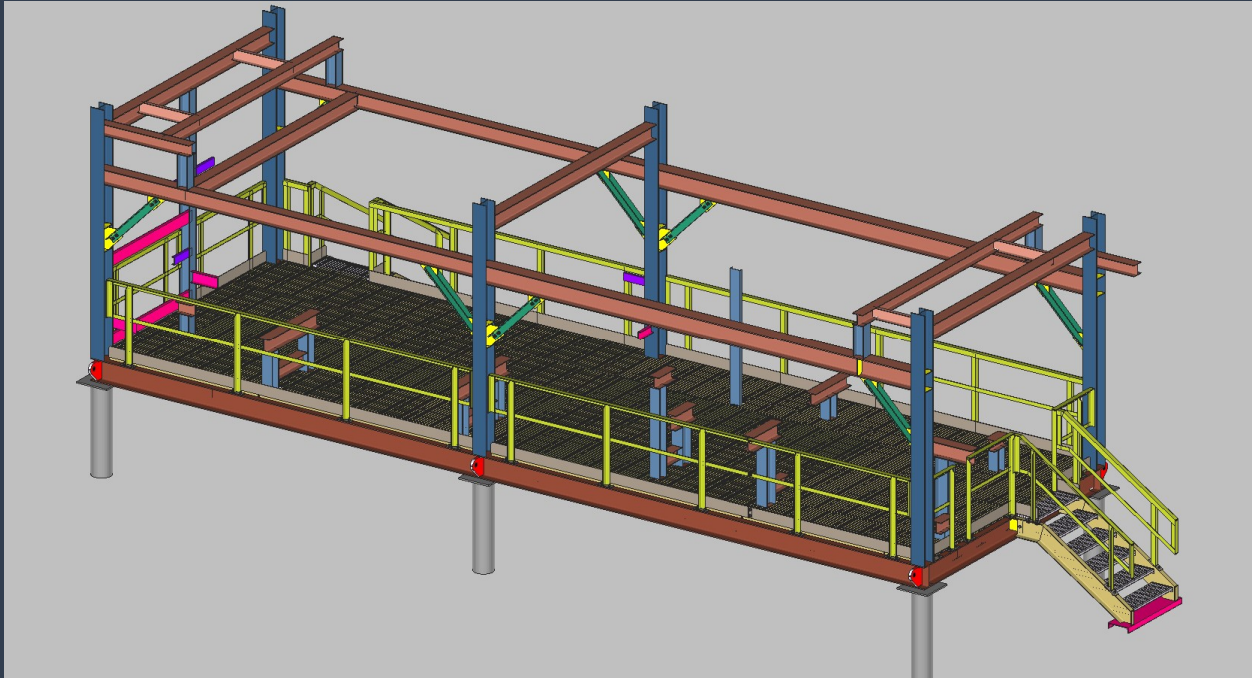
Type of Project: Institutional (School)
Steel: 110 Metric Tons
Design: CISC
Software: SDS2
Complexity: High (Glulam Structure)



Type of Project: Industrial (Gas Plant)
Steel: 250 Metric Tons
Design: CISC
Software: SDS2
Complexity: Medium (160 m of Catwalks)



Type of Project: Marine (Lay by berth & Terminal)
Steel: 120 Metric Tons
Design: CISC
Software: SDS2
Complexity: High (Floating Structure)



Type of Project: Industrial (Pipeline Skid)
Steel: 30 Metric Tons
Design: CISC
Software: SDS2
Complexity: Medium

ENGAGEMENT MODELS

- Lump sum
- Tonnage of steel
- Hourly basis
- Resources model

DELIVERABLES

- Drawing files (.dwg)
- DXF files (.dxf)
- DWF files (.dwf)
- PDF files (.pdf)
- CNC files (.nc1)
- KISS files (.kss)
- EJE files (.eje)
- StruMIS
- Tekla EPM

SOFTWARE



OUR PARTNERS



PROZUS - Design, drafting and document control services to construction, fabrication, manufacturing, and engineering companies.

www.prozus.com



APPBEAT SOLUTIONS - Redefining every aspect of business analytics. Power Platform, SharePoint, System Integrations & Customer IT Solutions.

www.appbeatsol.com



SDS2 2021 Solid Steel Awards Grand Prize Winner

